



# DSL & Friends COLLECTION



2023/2024



DEUTSCHE  
SCHULE  
LONDON





Each product you see in our catalogue is made on-demand, which means once you place the order, we start working to get it to you.

It takes time for us to create the product, but making each order on-demand allows us to avoid overproduction.

This way we're all part of the sustainable fashion movement.





# DSL Hoodie – NEW!

## DSL Collection



**Embroidered logo**

85% BIO-BAUMWOLLE

15% RECYCELTES POLYESTER

**Kids £34 - Adults £40**



# DSL Hoodie – NEW!

Logo printed

85% BIO-BAUMWOLLE

15% RECYCELTES POLYESTER

Kids £34 - Adults £40





# DSL T-shirt – NEW!

Logo printed

100% BIO-BAUMWOLLE

Kids £15 - Adults £20





# Friends Collection

"Get ready for a stylish spring with our merchandise for students!"





Style change: from size XS the hoodie is now oversized.

See size chart in the shop.

# Hoodies

85% BIO-BAUMWOLLE

15% RECYCELTES POLYESTER

Kids £34 - Adults £40

**NEW!**





# SPECIAL EDITION 23/24

## Adults Hoodie oversized

85% BIO-Baumwolle

15% Recyceltes Polester

Kids £38 - Adults £50



Stem green



Kaffa coffee



Black



Serene blue



Natural raw



Heather grey



Worker blue



French navy



Style change: from size XS the hoodie is now oversized.  
See size chart in the shop.

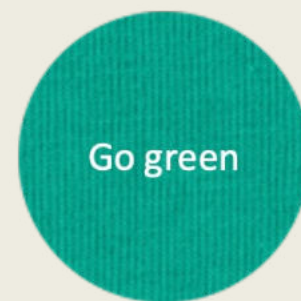
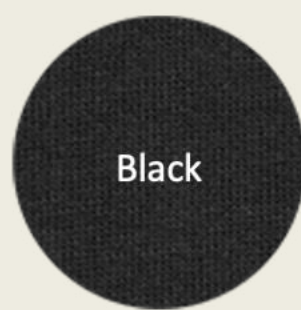
# Sweater

85% BIO-BAUMWOLLE

15% RECYCELTES POLYESTER

Kids £28 - Adults £40

**NEW!**





# Zipper

85% BIO-BAUMWOLLE

15% recyceltes Polyester

**Kids £35 - Adults £43**





# A.S.-Collection 23/24

Illustration: Axel Scheffler



STOCK SALE



**Sweater**  
**£32**



**Hoodie**  
**£38**



**T-Shirt**  
**£20**

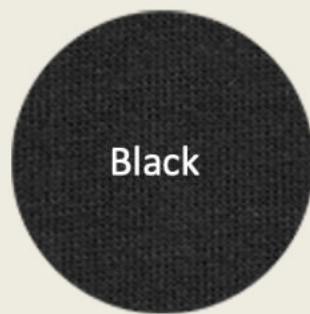
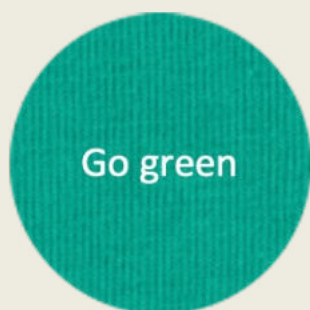




# T-Shirts

100% BIO-BAUMWOLLE

Kids £15 - Adults £20





# Polo Shirts

100% Organic ring-spun combed cotton

Kids £22 - Adults £25



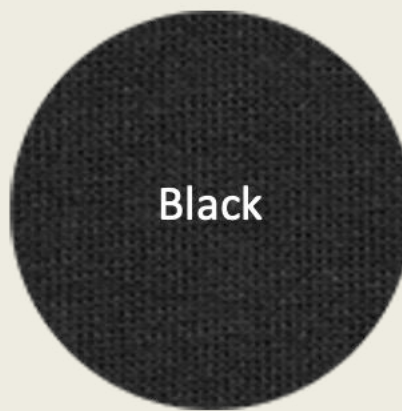


# Shorts

85% BIO-BAUMWOLLE

15% recyceltes Polyester

**Kids £28 - Adults £34**





**NEW!**

# Jogger

**KIDS: with elastic waistband!**

85% BIO-BAUMWOLLE

15% recyceltes Polyester

**Kids £34 - Adults £36**



French Navy



Heather Grey



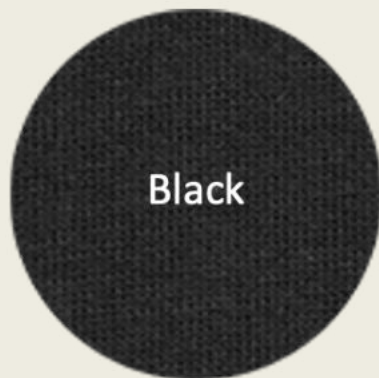
Khaki



Desert dust



Aloe



Black



Kaffa  
coffee



Teal Monstera





# Bags



## Gym Bag

80% BIO-BAUMWOLLE

20% recyceltes Polyester

37x43cm

~~£17~~ > £13

## Shopping Bag

80% BIO-BAUMWOLLE

20% recyceltes Polyester

49x37cm

£17





# Lunchbox

£6



**Size: 175 x 128 x 69mm**

100% recyclable, no plasticisers

Made in Germany

Food-safe and neutral in taste

Made using green electricity from their own photovoltaic system

These lunch boxes each have a simple snap closure.





# DSL Mug

£15

Fine bone china

Each edition is limited to 50 pieces.

Fully and sustainably made in Staffordshire for over 130 years.

Dishwasher safe!

Illustration: Axel Scheffler

3. Edition 23/24





# Insulated Sport Bottle 510ml

£15

Stainless steel material  
Double-wall construction  
Copper insulation  
Screw-on, spill-resistant lid

Height 25,1 cm  
Ø 6,7 cm



**LAST CHANCE**





# Insulated Sport Bottle 510ml A.S.-Collection

£15

Stainless steel material

Double-wall construction

Copper insulation

Screw-on, spill-resistant lid

Height 25,1 cm

Ø 6,7 cm

by Axel Scheffler exclusively for DSL





# Hausaufgabenhefte 2023/2024

£8

SchulfreundIN  
Grundschule

Schulplaner  
SEK

Exclusively created by Axel Scheffler and the kids of the Primary school for the DSL.





# Notebook

£4



Made using recycled board.

An eco-friendly spiral bound notebook with 80 ruled white lined 70gsm pages.

174x124x10mm





# Radiergummi / Eraser

£1

BOOK SHAPED ERASER  
40mm x 30mm x 10mm



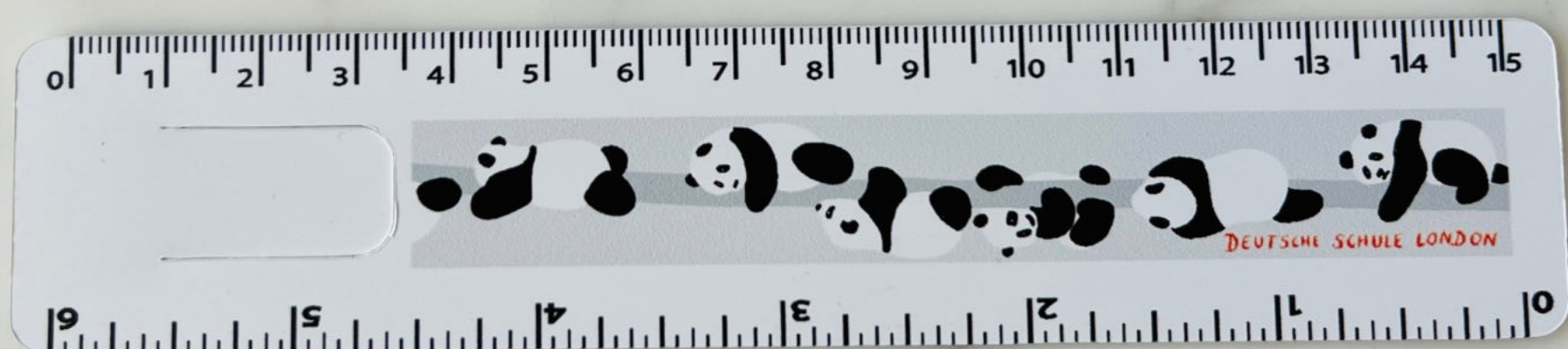
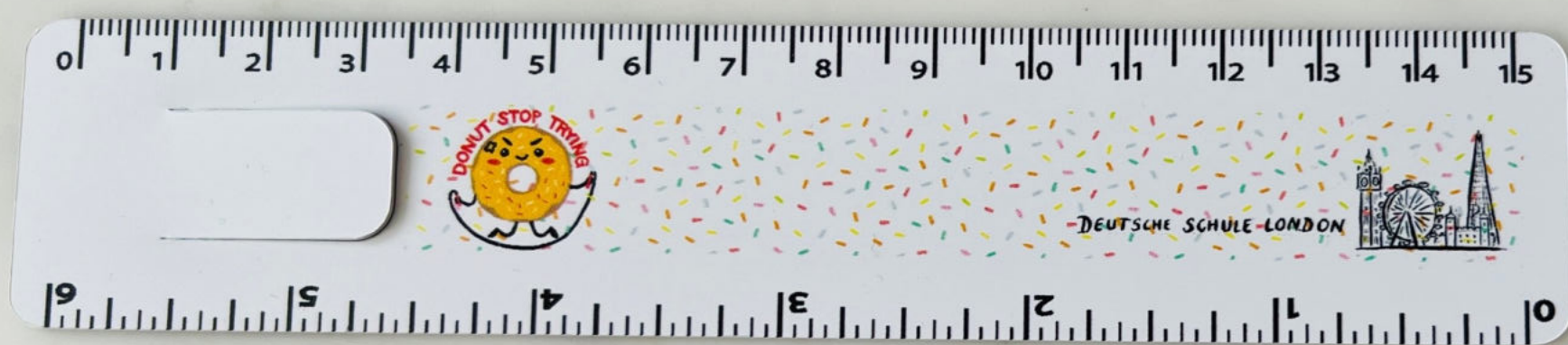


# Ruler / Lineal 15cm

**£1**

Made in the UK from recycled plastic.

This 2-in-1 ruler doubles not only as a 6" ruler but also comes with a cut slip to help keep track of your page





# Pencil case transparent

£2

Size: 213 x 115 mm  
Logo: Skyline black





# Book mark / Lesezeichen

(magnetic)

**£1**

Kept in place around the page using a neat, non-slip magnetic closure.

Size: 105 x 38mm (closed), 210 x 38mm (open)

A perfect match for the Schulplaner and the SchulfreundIn.





# LAST CHANCE



while stocks last







# Impressum

Herausgeber: Friends of Douglas House  
[www.friendsofdouglashouse.de](http://www.friendsofdouglashouse.de)

Fotos: Franziska Cook Photography  
& Friends

Illustrationen: Axel Scheffler

Models: SchülerInnen der DSL

Konzept: Sabine Mühlauer,  
Chiara Straka, Nadine Wunderlich

